

Instructions for Replacing the Thermo/Hygro Sensor

Outdoor Sensor Array (WH24) for Weather Ranger and Weather Sleuth Stations

Tools

1x 80mm Phillips screwdriver

1x 60mm Phillips screwdriver

Method

Step 1: Dismount the WH24 sensor array and remove the batteries

Step 2: Unscrew the two long screws from the base of the solar shield (See Figure 1)



Figure 1: Removing the solar shield

Step 3: Open up the casing of the sensor array by unscrewing the six screws placed around the sensor (See Figure 2) as shown. Carefully open the casing.



Figure 2: Opening the casing

Step 4: Unscrew the four screws that connect the circuit board cover to the inside of base of the casing. Gently lift this off to free the circuit board allowing you to access the PCB (circuit board) and the connection cables.

Step 5: Disconnect the cable (marked J5) from the PCB (circuit board) as shown in Figure 3. If you trace this cable from the hole leading to the solar shield, to confirm you are disconnecting the correct cable

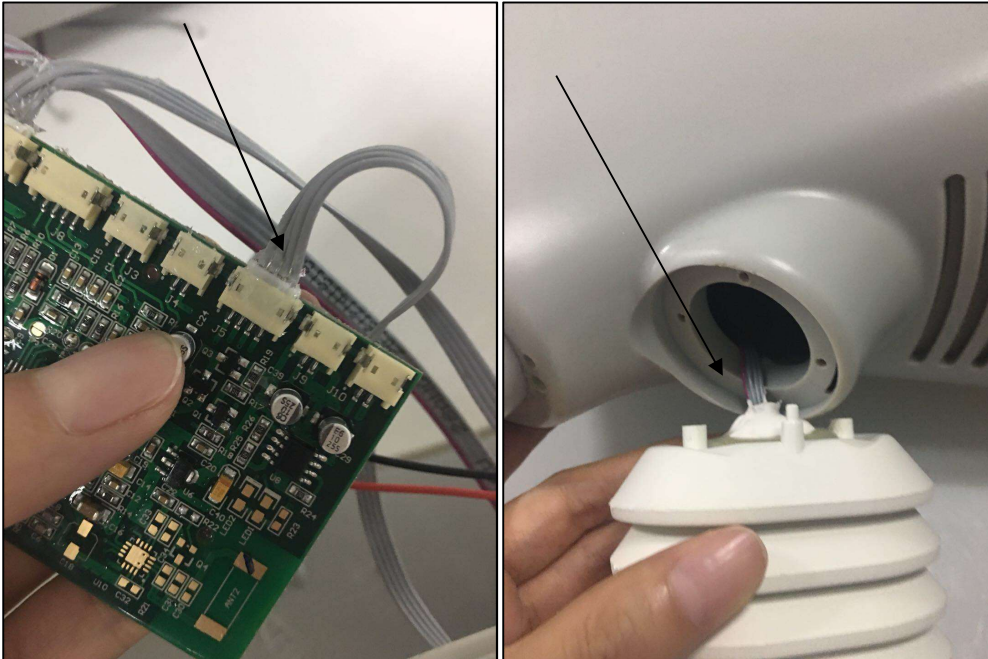


Figure 3: Removing the signal cable from the PCB

Step 6: Gently pull out the whole Thermo/Hygro sensor, taking care to feed the cable through and cable routing or ties.

Step 7: Install the new Thermo/Hygro sensor and reverse the disassembly process.



Figure 4: Installing a new sensor